



COVID-19 impact on the practical  
aspects of transfer pricing analysis and  
audit preparation

Deloitte Academy Training

September, 2020



**MAKING AN  
IMPACT THAT  
MATTERS**  
*since 1845*

# Deloitte Academy

Deloitte Academy provides corporate trainings for companies, as well as open sessions for anyone interested.

Deloitte Academy offers comprehensive solutions that aim to improve participants' competencies across various business lines. The courses are tailor-made to match the knowledge and skill level of attendees and promote the continuous development of business competencies.

## Advantages of Deloitte Academy trainings

- Academy training sessions are delivered by subject-matter experts who have completed a range of major projects in various professional fields;
- The training sessions include both theoretical elements and practical examples.

## Announcement of Deloitte Academy training

Deloitte is happy to invite you to Deloitte Academy training - COVID-19 impact on the practical aspects of transfer pricing analysis and audit preparation


Find out more detailed information about the training below.

We will be delighted to see you at our training.



# Online Training

## COVID-19 impact on the practical aspects of transfer pricing analysis and audit preparation | 22 October 2020 | 14:00 – 17:00

<b>Location</b>	Online training session
<b>Language</b>	Georgian
<b>Fee</b>	120 GEL, excluding VAT. * -20% discount for two or more participants from the same company.
<b>Main topics</b>	<ul style="list-style-type: none"><li>• Selection of transfer pricing methods with practical examples (case studies);</li><li>• Transfer pricing analysis for transactions that include goods and services (case studies);</li><li>• Impact of COVID-19 on transfer pricing analysis;</li><li>• Preparation for a transfer pricing audit.</li></ul>
<b>Facilitators</b>	 <p><b>Mikheil Chapurishvili   Assistant Manager, Tax and Legal</b> Mikheil has over six years’ of tax consulting and transfer pricing experience. He provided professional services to a number of local and international clients over his career with Deloitte.</p>

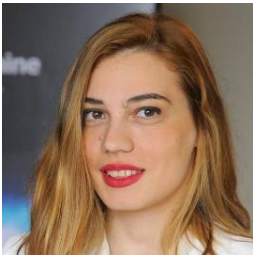
To register for this training, please fill in the form via [link](#) by 15 October.

**Deloitte Academy electronic certificates will be provided to each participant upon completion of the training.**





## Contacts



### **Ketevan Kukhianidze**

Head of Deloitte Academy

Tel: +995 322 244 566

E-mail: [academy@deloitte.ge](mailto:academy@deloitte.ge)



### **Inga Rekhviashvili**

Deloitte Academy Coordinator

Tel: +995 322 244 566

Mob: +995 593 420 131

Deloitte & Touche LLC  
King David Business Center  
12 Merab Aleksidze Street  
Tbilisi, 0171,  
Georgia

Tel: +995 (32) 224 45 66  
Fax: +995 (32) 224 45 69  
[deloitte.ge](http://deloitte.ge)

Deloitte refers to one or more of Deloitte Touche Tohmatsu Limited (“DTTL”), its global network of member firms, and their related entities. DTTL (also referred to as “Deloitte Global”) and each of its member firms are legally separate and independent entities. DTTL does not provide services to clients. Please see [www.deloitte.com/about](http://www.deloitte.com/about) to learn more.

Deloitte is a leading global provider of audit and assurance, consulting, financial advisory, risk advisory, tax and related services. Our network of member firms in more than 150 countries and territories serves four out of five Fortune Global 500® companies. Learn how Deloitte’s approximately 312,000 people make an impact that matters at [www.deloitte.com](http://www.deloitte.com).

This communication contains general information only, and none of Deloitte Touche Tohmatsu Limited, its member firms or their related entities (collectively, the “Deloitte network”) is, by means of this communication, rendering professional advice or services. Before making any decision or taking any action that may affect your finances or your business, you should consult a qualified professional adviser. No entity in the Deloitte network shall be responsible for any loss whatsoever sustained by any person who relies on this communication.